

### BLUE STAR ROSE COLLECTION

2-Year Blooming Size—Hardy Everblooming  
 One each above Roses—Total 4 Blooming Size Roses  
 —for \$5.00.  
 Three each—total 12 Blooming Size Roses—for \$13.85.  
 Sold separately at \$1.35 each.

1. **K. A. VIKTORIA.** Creamy white. Long buds.
2. **MRS. P. S. DUPONT.** Golden yellow. Prolific bloomer.
3. **ETOILE DE HOLLANDE.** One of the best red Roses.
4. **EDITOR McARLAND.** Fragrant deep pink.

## Rose Selections

### Favorite Hardy Everblooming Garden Roses

**AMI QUINARD.** Deep, velvety red.  
**BETTY UPRICHARD.** Blend of carmine and salmon.  
**CALEDONIA.** Large, pure white.  
**CONDESA DE SASTAGO.** Coppery pink inside, golden outside.  
**EDITH NELLIE PERKINS.** Favorite two-toned pink.  
**PRES. HOOVER.** Blend of scarlet, yellow and flame.  
 Prices on above Favorite Hardy Everblooming Garden Roses—2-year Blooming Size—6 for \$7.50, 12 for \$14.40. Sold separately at \$1.35 each.

### TEN LEADING ALL-AMERICA PATENTED ROSES 2-year Blooming Size

**CAPISTRANO.** Patent No. 992. Rich, deep, glowing rose-pink. \$2.25 each.  
**CHARLOTTE ARMSTRONG.** Patent No. 455. Brilliant carmine-red. \$2.25 each.  
**FORTY-NINER.** Patent No. 792. Outside petals yellow; inside, red. \$2.50 each.  
**MIRANDY.** Patent No. 632. Gorgeous, fragrant red Rose. \$2.25 each.  
**MISSION BELLS.** Patent No. 923. Blend of salmon and clear pink. \$2.25 each.  
**NOCTURNE.** Patent No. 713. Bright cardinal-red. \$2.00 each.  
**PEACE.** Patent No. 591. Lovely blend of gold, cream and pink. \$2.50 each.  
**RUBAIYAT.** Patent No. 758. Large, rich crimson. \$1.75 each.  
**SAN FERNANDO.** Patent 785. Glowing currant-red. \$1.75 each.  
**SUTTER'S GOLD.** Patent No. 885. Yellow shaded with orange and red. \$2.25 each.

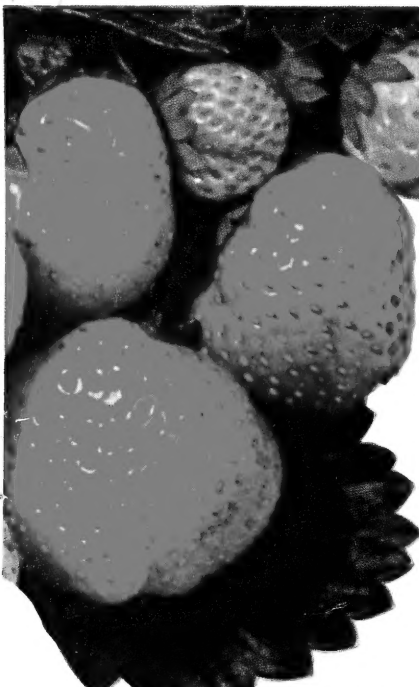
### EVERBLOOMING FLORIBUNDAS For Lots of Bloom 2-Year Blooming Size Plants

Low-growing Bush Roses producing clusters of blooms from early summer until late fall. We offer two of the most popular, as follows:  
**FLORADORA.** Long-lasting blossoms of cinnabar-red. \$1.50 each.  
**GOLDILOCKS.** Patent No. 672. Golden buds and many-petaled true golden yellow blossoms which are fine for cutting. \$1.50 each.

### POPULAR CLIMBING ROSES 2-Year Blooming Size

**BLAZE.** Patent No. 10. Scarlet-crimson. Blooms in June, also some blossoms throughout summer. \$1.50 each.  
**NEW DAWN.** Patent No. 1. Flesh-pink. Blooms May, followed by some blossoms during summer. \$1.50 each.  
**PAUL'S SCARLET CLIMBER.** Popular vivid scarlet. \$1.35 each.  
 Write for Free Copy New 56-page Planting Guide Catalog illustrating many Roses in color.

2, 79 Index \* = 1954



Enjoy  
 Fresh  
 Sweet

Strawberries  
 from your  
 Own Garden

### New Superfection GIANT EVERBEARER

All the name implies. Berries exceptionally large, dark red. Not only popular for the home garden but a profitable commercial variety. Produces a crop in the spring equal in quality and yield to the best one-season varieties and another in the fall—demanding handsome prices. \$2.55 per 25; \$4.10 per 50; \$6.45 per 100; \$12.90 per 250; \$21.00 per 500; \$36.75 per 1,000. Postpaid to points east of the Mississippi.

New Superfection

### Red Rich SENSATIONAL NEW EVERBEARING STRAWBERRY U. S. Plant Patent No. 993

The Strawberry about which so much has been written in magazines and newspapers. Now available for home garden planting. Combines all the good qualities demanded in an Everbearer—sweetness, size, color, vigor, and yield.  
 Perfect for freezing—being solid and firm with rich red color all the way through.  
**RED RICH PRICES:** 12 plants for \$2.95; 25 for \$5.00; 50 for \$8.50; 100 for \$15.00; 250 for \$32.50; 500 for \$55.00. Shipped postpaid when remittance accompanies order.  
**PLANTING INFORMATION.** Strawberries are usually planted 12 in. apart in rows 3 1/2 ft. apart—requiring 9,900 plants per acre.  
**POSTAGE INFORMATION.** Postpaid Strawberry Collections apply only to points east of the Mississippi.

### SPRING FRUITING STRAWBERRIES

The varieties we list have been selected not only because of their fresh fruit qualities and adaptability to general use, but also because of being superior freezers.

- EARLY**  
**BLAKEMORE.** The favorite Strawberry of the South. Early, bright red, firm, sweet.  
**PREMIER.** One of the best known early commercial and home garden berries.
- MIDSEASON**  
**ROBINSON.** Good midseason. Late bloomer, especially recommended for sections subject to late spring frosts. Large, sweet, firm.
- LATE**  
**AMBROSIA.** Considered the largest and best of all late Strawberries.

**PRICES ON SPRING FRUITING STRAWBERRIES:** \$1.55 per 25; \$2.35 per 50; \$3.95 per 100; \$7.90 per 250; \$12.25 per 500; \$19.25 per 1,000. Postpaid to points east of the Mississippi.

### Home Garden Strawberry Collections FRESH FRUIT HOME GARDEN COLLECTION

**100 BLAKEMORE.** Early, bright red.  
**100 ROBINSON.** Good midseason.  
**50 AMBROSIA.** Fine late.  
**Total 250 Plants—Offer No. S-54—\$7.90, Postpaid.**  
**FREEZER COLLECTION No. SS-54**  
 If the family enjoys the convenience of a home freezer or locker, we recommend duplicating the above collection—**Total 500 Plants—Offer No. SS-54—\$12.25, postpaid.**  
**LARGE FAMILY GARDEN COLLECTION**  
**100 PREMIER.** Well known early.  
**100 BLAKEMORE.** Early, bright red.  
**100 ROBINSON.** Good midseason.  
**100 AMBROSIA.** Fine late.  
**100 SUPERFECTION.** Giant Everbearer.  
**Total 500 Plants—Offer No. 1-54—\$14.00, Postpaid.**  
**FREEZER COLLECTION No. LL-54**  
 For home freezer and locker use, we suggest duplicating Large Family Collection—**Total 1,000 Plants—Offer No. LL-54—\$22.75, postpaid.**

If Not Delivered in 10 Days Return to  
**WAYNESBORO NURSERIES,**  
 Waynesboro, Virginia  
 Return Postage Guaranteed

Sec. 34.66, P. L. & R.  
 U. S. POSTAGE  
**PAID**  
 Waynesboro, Va.  
 Permit No. 9

FEB 2 1954  
 U. S. Department of Agriculture

Librarian  
 U. S. Dept. of Agri.  
 Washington 25, D. C.

**LANDSCAPE  
YOUR HOME  
WITH**

# Flowering Shrubs

Our Blooming Size Plants will furnish beauty the first summer after being transplanted. Offered in sizes which can be successfully transplanted without ball.

**HYDRANGEA, PEEGEE.** Enormous white, conical-shaped heads appearing in August and remaining intact throughout the season but turning light pink during fall. 18 to 24 in., \$1.00 each; 3 or more, 90c each. 2 to 3 ft., \$1.50 each; 3 or more, \$1.35 each.

**LILAC, COMMON PURPLE.** Old-fashioned favorite. 2 to 3 ft., \$1.75 each; 3 or more, 1.60 each.

**LILAC, CHINESE** (Rothomagensis). Violet-red. Profuse bloomer. 3 to 4 ft., \$2.25 each; 3 or more, \$2.10 each.

**LILAC, Hybrid Named Varieties.** See our General Catalog.

**MOCKORANGE, SWEET** (Philadelphus coronarius). Vigorous grower. Masses of creamy white flowers in May. 2 to 3 ft., \$1.00 each; 3 or more, 90c each. 3 to 4 ft., \$1.50 each; 3 or more, \$1.35 each. 4 to 5 ft., \$2.00 each; 3 or more, \$1.85 each.

**MOCKORANGE, VIRGINAL.** Large, semi-double fragrant pure white. 2 to 3 ft., \$1.50 each; 3 or more, \$1.35 each.

**SNOWBALL, COMMON.** Large white flowers in May. 2 to 3 ft., \$1.25 each; 3 or more, \$1.15 each. 3 to 4 ft., \$1.75 each; 3 or more, \$1.60 each.

**SNOWBALL, JAPANESE.** Dwarf-like shrub. Big white flowers in June; glossy green foliage in summer, turning purplish red in autumn. 2 to 3 ft., \$1.75 each; 3 or more, \$1.60 each. 3 to 4 ft., \$2.25 each; 3 or more, \$2.10 each.

**SNOWBERRY.** Handsome, dark green foliage and a profusion of large, white berries in the fall. 2 to 3 ft., \$1.00 each; 3 or more, 90c each. 3 to 4 ft., \$1.50 each; 3 or more, \$1.35 each.

**SPIREA, BLUE** (Caryopteris incana). Also known as Blue Mist. Neat, compact, low-growing shrub. Dainty blue flowers from August until frost. 3-yr., 75c each; 3 or more, 70c each.

**SPIREA, KOREAN.** Resembles Van Houtte, blooming two weeks later. Pure white. 2 to 3 ft., \$1.00 each; 3 or more, 90c each. 3 to 4 ft., \$1.50 each; 3 or more, \$1.35 each.

**SPIREA, REEVES.** White flowers borne in clusters along the branches in May. 2 to 3 ft., \$1.00 each; 3 or more, 90c each. 3 to 4 ft., \$1.50 each; 3 or more, \$1.35 each.

**SPIREA, VAN HOUTTE.** Spreading, attractive shrub with graceful, weeping branches. Good foliage. Covered with masses of pure white flowers in early spring. Most popular Spirea. 2 to 3 ft., 75c each; 3 to 30, 70c each; 30 or more, 65c each. 3 to 4 ft., \$1.00 each; 3 to 30, 90c each; 30 or more, 80c each.

**TAMARISK.** Tall, slender, straggly growing shrub with beautiful feather-like foliage. Delicate pink flowers in April. 3 to 4 ft., \$1.25 each; 3 or more, \$1.15 each. 4 to 5 ft., \$1.75 each; 3 or more, \$1.60 each.

**WEIGELA ROSEA.** Well-known pink Weigela, blooming abundantly in May and June. 2 to 3 ft., \$1.25 each; 3 or more, \$1.15 each.



Crape Myrtle

**ABELIA GRANDIFLORA.** One of the most beautiful and useful of all Flowering Shrubs. Glossy foliage, which is evergreen in Virginia, excepting in severe winters. Small, light pink, tubular blossoms from July until frost. 18 to 24 in., \$1.50 each; 3 or more, \$1.35 each. 2 to 3 ft., \$2.00 each; 3 or more, \$1.85 each.

**ALTHEA (Rose of Sharon).** Pink, Purple, Red, White. 2 to 3 ft., \$1.00 each; 3 or more, 90c each.

**BARBERRY THUNBERGI.** Green-leaved Barberry. Used as specimens, in borders, and hedges. 2-yr., 12 to 18 in., 45c each; 3 to 30, 40c each; 30 or more, 35c each. 2-yr., 18 to 24 in., 60c each; 3 to 30, 55c each; 30 or more, 50c each. For heavier plants, write for our New 56-page Planting Guide Catalog.

**BARBERRY, RED-LEAVED.** Resembles Green-leaved Barberry, but has blood-red foliage. Yellow blossoms followed by red berries which hang on well into winter. Plant in full sunlight. 12 to 15 in., 75c each; 3 to 30, 70c each; 30 or more, 65c each. 15 to 18 in., 85c each; 3 to 30, 80c each; 30 or more, 75c each.

**BUSH HONEYSUCKLE.** Pink and White. 2 to 3 ft., \$1.00 each; 3 or more, 90c each.

**BUTTERFLY BUSH.** (Buddleia). Pink, Red, Lavender. 2-yr., \$1.00 each; 3 or more, 90c each.

**CHINESE BEAUTYBERRY.** Graceful, dwarf shrub. White flowers July and August, followed by masses of purple berries. 2 to 3 ft., \$1.50 each; 3 or more, \$1.35 each. 3 to 4 ft., \$2.00 each; 3 or more, \$1.85 each.

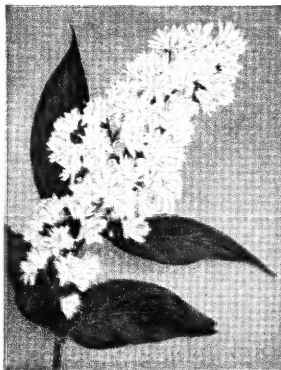
**CORALBERRY CHENAULTI.** Useful dwarf shrub. Pink flowers in early summer, coral berries in winter. 3 to 4 ft., \$1.50 each; 3 or more, \$1.35 each.

**CRANBERRY BUSH.** White flowers followed by orange-red berries. 2 to 3 ft., \$1.25 each; 3 or more, \$1.15 each. 3 to 4 ft., \$1.75 each; 3 or more, \$1.60 each.

**CRAPE MYRTLE.** Pink, Red and White. The South's most beautiful shrub. Blooms July until frost. Adapted to southern and eastern Virginia and along the Atlantic coast as far north as Philadelphia. 18 to 24 in., \$1.50 each; 3 or more, \$1.35 each. 2 to 3 ft., \$2.00 each; 3 or more, \$1.85 each.

**DEUTZIA CRENATA.** Double pink, slightly fragrant. 2 to 3 ft., \$1.00 each; 3 or more, 90c each. 3 to 4 ft., \$1.50 each; 3 or more, \$1.35 each. 4 to 5 ft., \$2.00 each; 3 or more, \$1.85 each.

**DEUTZIA, PRIDE OF ROCHESTER.** Fast-growing. Masses of pink-tinged flowers. 2 to 3 ft., \$1.00 each; 3 or more, 90c each. 3 to 4 ft., \$1.50 each; 3 or more, \$1.35 each. 4 to 5 ft., \$2.00 each; 3 or more, \$1.85 each.

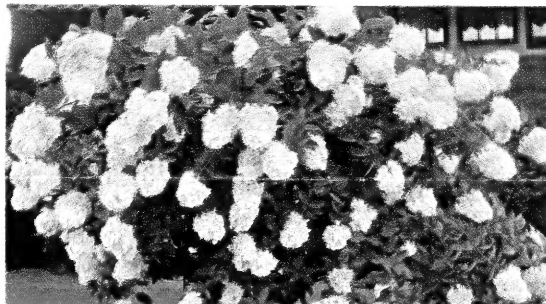


Deutzia—Pride of Rochester

**DOGWOOD, RED STEM.** Spreading shrub with reddish purple branches which are ornamental during winter. Creamy white flowers, white berries. 2 to 3 ft., \$1.00 each; 3 or more, 90c each. 3 to 4 ft., \$1.50 each; 3 or more, \$1.35 each. 4 to 5 ft., \$2.00 each; 3 or more, \$1.85 each.

**FORSYTHIA, GOLDENBELL.** Grows to average height of 6 to 8 ft. Covered with yellow, tubular flowers before foliage appears in spring. We offer Forsythia in profuse-blooming upright variety and also Suspensa, a weeping graceful grower. 2 to 3 ft., \$1.00 each; 3 to 30, 90c each; 30 or more, 80c each. 3 to 4 ft., \$1.50 each; 3 to 30, \$1.35 each; 30 or more, \$1.20 each. 4 to 5 ft., \$2.00 each; 3 to 30, \$1.85 each; 30 or more, \$1.70 each.

**FORSYTHIA, SPRING GLORY.** Loveliest of all the Goldenbells. Dwarf grower. Large, creamy yellow flowers of an entirely different shade. 18 to 24 in., \$1.00 each; 3 or more, 90c each. 2 to 3 ft., \$1.50 each; 3 or more, \$1.35 each.



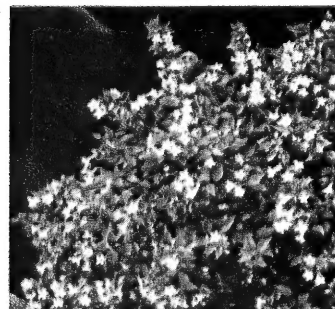
Hydrangea Peegee

Send for our 56-page Planting Guide in color, listing other varieties and sizes of shrubs.

Spring Glory Forsythia



Abelia Grandiflora



## Order Early While Stock is Complete

**PLANTING SEASONS.** The spring planting season normally begins in February and continues until the end of May; the fall season begins in October, continuing through December. Some planting is done throughout the year.

**TRANSPORTATION CONDITIONS.** All plant material and supplies, unless otherwise specified, are offered F.O.B. our nursery. Shipment can be made by parcel post, express, freight, or motor freight, depending somewhat upon size of shipment. Small items offered in this folder can be sent by parcel post to points within a radius of three hundred miles by adding to your remittance 15% of list prices to cover postage and special packing; three hundred to six hundred miles, 20%. Deciduous Nursery Stock more than 6 feet in height and Balled and Burlapped Evergreens cannot be sent by parcel post.

**TERMS.** Net cash, or 25% deposit on C.O.D. shipments. Remittances may be made by money order or personal check.

**REPLACEMENT GUARANTEES.** We are very careful in keeping our varieties true to name—and seldom have a report of plant material proving otherwise. In such instances we limit our adjustments to either refunding without charge or refunding full purchase price. Losses from transplanting our vigorous, carefully handled plant materials are at a minimum, but we agree to share with our customers on a fifty-fifty basis any losses reported within 12 months from date of delivery by refunding at half catalog list price, provided original purchase was paid as for per sale terms and plant material has been given reasonable attention.

**WAYNESBORO NURSERIES, Waynesboro, Virginia**

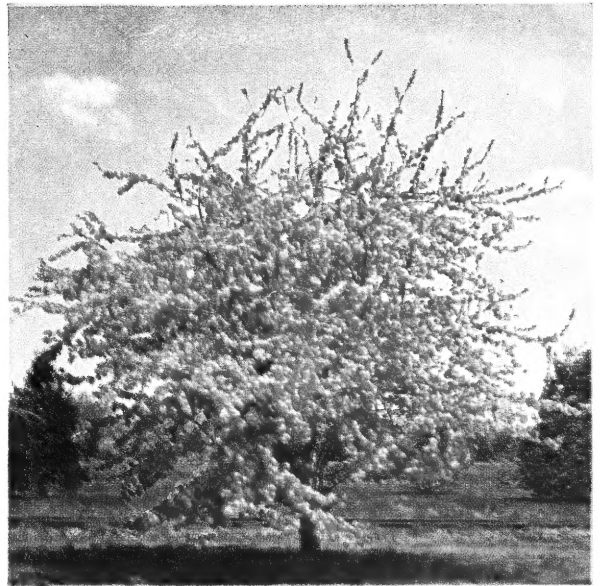




Flowering Peach

Write for free copy of 56-page Planting Guide in color.

**CUT-LEAVED WEEPING BIRCH.** Slender tree with white bark, graceful weeping branches; fern-like cut leaves. A most beautiful tree. 5 to 6 ft., \$4.00 each; 6 to 8 ft., \$5.00 each.



Hopa Flowering Crab

# Shade and Flowering Trees

We offer below only a small number of the trees available. For more complete assortment of varieties and sizes, ask for our New 56-page Planting Guide Catalog in color.

**ASH, EUROPEAN MOUNTAIN.** Medium-growing tree. Striking orange-scarlet berries. 5 to 6 ft., \$4.00 each; 3 or more, \$3.75 each. 6 to 8 ft., \$5.00 each; 3 or more, \$4.75 each.

**BIRCH, EUROPEAN WHITE.** White bark. Good shade tree. 5 to 6 ft., \$3.50 each; 3 or more, \$3.30 each. 6 to 8 ft., \$4.50 each; 3 or more, \$4.20 each.

**CATALPA BUNGEI (Umbrella Catalpa).** Small, umbrella-like tree. 4 to 5 ft., \$3.50 each; 3 or more, \$3.30 each. 5 to 6 ft., \$4.50 each; 3 or more, \$4.20 each.

**CATALPA SPECIOSA (Western Catalpa).** Fast grower. Desirable where quick effect is desired. 6 to 8 ft., \$3.50 each; 3 or more, \$3.30 each.

**DOGWOOD, PINK FLOWERING.** One of the most popular flowering trees. 18-24 in., \$2.75 each; 3 or more, \$2.60 each. 2 to 3 ft., \$3.50 each; 3 or more, \$3.30 each.

**DOGWOOD, WHITE FLOWERING.** Virginia's State Flower. Especially effective when planted in groups with Pink Flowering Dogwood. 2 to 3 ft., \$2.25 each; 3 or more, \$2.10 each. 3 to 4 ft., \$2.75 each; 3 or more, \$2.60 each.

**ELM, CHINESE.** Fast-growing. Dark green foliage. 5 to 6 ft., \$2.00 each; 3 to 30, \$1.85 each; 30 or more, \$1.70 each. 8 to 10 ft., \$3.75 each; 3 to 30, \$3.50 each; 30 or more, \$3.30 each.

**FLOWERING CRABS.** Among the most useful ornamental trees. Planted for shade as well as flowers in May and fruits in autumn. Offered in following choice varieties:

**DOLGO.** Single white. Red fruit.

**HOPEA.** Bright pink. Red fruit.

**REDFIELD.** Dark pink. Red fruit.

**RED SILVER.** Crimson flowers. Red fruit.

**FLOWERING CRAB PRICES:** 3 to 4 ft., \$2.25 each; 3 or more, \$2.10 each. 4 to 6 ft., \$2.75 each; 3 or more, \$2.60 each.

**FLOWERING PEACH.** Striking, colorful tree for spring garden. Delicious fruit in August. Double pink, red and white. 3 to 4 ft., \$2.00 each; 3 or more, \$1.85 each. 4 to 6 ft., \$2.75 each; 3 or more, \$2.60 each.

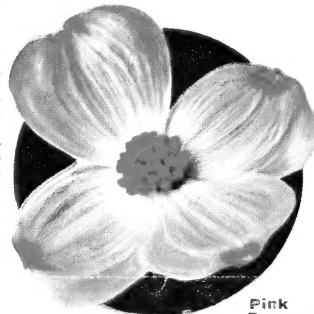
**GUM, SWEET.** Medium size. Colorful autumn foliage. 5 to 6 ft., \$4.00 each; 3 or more, \$3.75 each.

**LINDEN, AMERICAN.** Fast grower. Large, dark green foliage; fragrant creamy flowers. 5 to 6 ft., \$3.50 each; 3 or more, \$3.30 each. 6 to 8 ft., \$4.50 each; 3 or more, \$4.20 each.

**LOCUST, THORNLESS HONEY.** Finely cut, dark green foliage. Fragrant white flowers in May. 6 to 8 ft., \$3.50 each; 3 or more, \$3.30 each.

**MAPLE, NORWAY.** Medium sized tree suited for street and home planting. 5 to 6 ft., \$3.75 each; 3 or more, \$3.50 each. 6 to 8 ft., \$4.50 each; 3 or more, \$4.20 each.

**MAPLE, SCHWEDLER'S.** Red-leaved in spring, turning deep green later in the season. 5 to 6 ft., \$4.25 each; 3 or more, \$4.00 each. 6 to 8 ft., \$5.00 each; 3 or more, \$4.75 each.



Pink Dogwood

**MAPLE, SILVER.** Fast grower. Light green foliage, slightly silvery underneath. 5 to 6 ft., \$2.50 each; 3 or more, \$2.35 each. 6 to 8 ft., \$3.50 each; 3 or more, \$3.30 each.

**OAK, WHITE.** Well-known American White Oak. 5 to 6 ft., \$4.25 each; 3 or more, \$4.00 each. 6 to 8 ft., \$5.00 each; 3 or more, \$4.75 each.

**POPLAR, LOMBARDY.** Tall, slender, rapid grower. 5 to 6 ft., \$1.25 each; 3 to 30, \$1.15 each; 30 or more, \$1.10 each. 6 to 8 ft., \$1.50 each; 3 to 30, \$1.25 each. 8 to 10 ft., \$2.00 each; 3 to 30, \$1.85 each.

**REDBUD.** Beautiful dwarf-like tree. Small pink flowers cover stems in early spring, before foliage appears. 3 to 4 ft., \$1.75 each; 3 or more, \$1.60 each. 4 to 6 ft., \$2.50 each; 3 or more, \$2.35 each.

**RUBY TREE (Prunus Thundercloud).** Purplish red foliage in spring; ornamental, bright red fruits. 3 to 4 ft., \$2.25 each; 3 or more, \$2.10 each. 4 to 6 ft., \$2.75 each; 3 or more, \$2.60 each.

**WILLOW, WEEPING.** Especially suitable for planting along streams, but can be grown on well-drained soil. 3 to 4 ft., \$1.75 each; 3 or more, \$1.60 each.

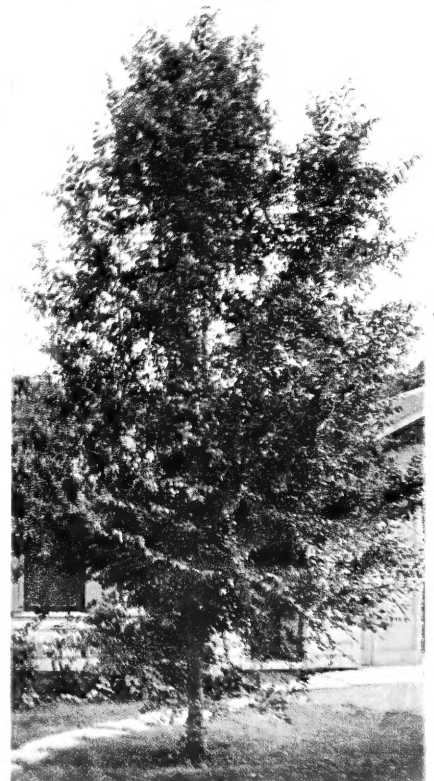
**Note:** Large R&B Specimen Trees available for delivery to points within our trucking area. We would be glad to have a list of your requirements for quotations.

## EVERGREENS

**CONIFEROUS EVERGREENS.** Write for New 56-page Planting Guide Catalog for list of varieties, sizes, prices and color illustrations.

**BROAD-LEAVED EVERGREENS.** Including Azaleas, Hollies, Boxwoods, Hybrid Rhododendrons. Write for New 56-page Planting Guide Catalog illustrating many in color.

Chinese Elm



## HEDGES Beautiful Living Fences

**EVERGREEN CHINESE PRIVET.** (*Ligustrum sinensis*). Also known as Amur River South Privet. Improved, evergreen type. Just as hardy as California Privet and has added advantage of retaining its glossy green foliage throughout average winter. Rapid, compact grower. Plant 6 in. apart in single row, and prune back within few inches of ground at time planted.

	10 to 50	50 to 100	100 to 300	300 up
	Each	Each	Each	Each
1-yr., 12-18 in., slightly branched	.25	\$0.12	\$0.10	\$0.08
2-yr., 18-24 in., heavily branched	.30	.22	.20	.18
2-yr., 2-3 ft., heavily branched	.30	.26	.24	.22

Evergreen Chinese Privet



### NEW MULTIFLORA ROSE FENCE

Inexpensive, easy to grow, stock-tight. Grows 6 to 8 ft. tall, 5 to 7 ft. wide. Plant 1 ft. apart in single row. Protects soil, crops, game.

	50 to 100	100 to 300	300 up
	Each	Each	Each
8 to 12 in.	\$0.10	\$0.08	\$0.07
12 to 18 in.	.15	.12	.10
24 to 30 in.	.33	.30	.27

Write for prices on larger quantities Chinese Evergreen Privet and Rosa Multiflora.

### BOXWOOD

One of the first plants to be used in America for hedges. Many famous Boxwood hedges are still to be found on Virginia colonial estates. Plants we offer are dug with puddled roots and transplant satisfactorily.

#### STANDARD AMERICAN BOXWOOD

(*Buxus sempervirens*). Medium grower. Pointed leaves. For immediate effect, we recommend planting 12 in. apart in single row.

	Per Doz.	Per 50	Per 100
8 to 10 in., 5-yr.—Puddled	\$ 9.00	\$35.00	\$65.00
10 to 12 in., 6-yr.—Puddled	12.00	45.00	85.00

#### DWARF ENGLISH BOXWOOD

(*Buxus suffruticosa*). Round-leaved, slow growing, compact Boxwood. Plant 12 in. apart in single row.

	Doz.	50	100
6 to 8 in., 6-yr. transplanted—Puddled	\$ 9.00	\$35.00	\$65.00
8 to 10 in., 7-yr. Transplanted—Puddled	12.00	45.00	85.00

Write for prices on larger sizes and quantities of Boxwoods.

Write for Free Copy New 56-page Planting Guide Catalog in color.

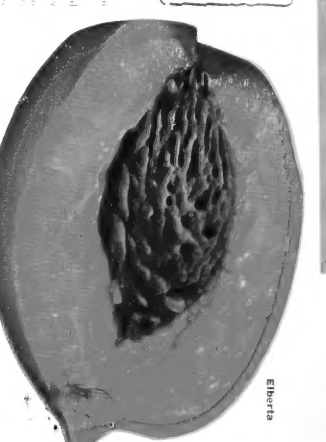




# GROW AND ENJOY YOUR OWN FRUIT — OR PROFIT FROM COMMERCIAL FRUIT GROWING

*Choice Fruit and Nut Trees, Small Fruits and Ornamentals*  
**Offered by Virginia's Largest Growers—For 1954 Planting**  
**Order Early While Stock is Complete**  
**WAYNESBORO NURSERIES · WAYNESBORO, VIRGINIA**

*Apples*  
*Peaches*



### Peach Tree Prices

1 to 5	5 to 10	10 to 30	30 to 50	50 to 100
Each	Each	Each	Each	Each
1.00	1.45	1.80	2.30	2.80
1.00	1.45	1.80	2.30	2.80
1.00	1.45	1.80	2.30	2.80
1.00	1.45	1.80	2.30	2.80
1.00	1.45	1.80	2.30	2.80
1.00	1.45	1.80	2.30	2.80

*Cherries*



### Standard Sweet Cherries

4 1/2 ft. Junjo size	1.00	1.45	1.80	2.30	2.80
4 1/2 ft. Big Boy	1.00	1.45	1.80	2.30	2.80
4 1/2 ft. Rainier	1.00	1.45	1.80	2.30	2.80
4 1/2 ft. Montmorency	1.00	1.45	1.80	2.30	2.80
4 1/2 ft. Bing	1.00	1.45	1.80	2.30	2.80
4 1/2 ft. Lapins	1.00	1.45	1.80	2.30	2.80

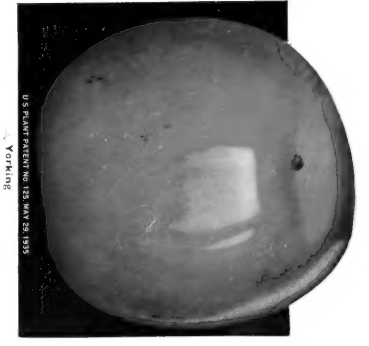
### Standard Sweet Cherries

4 1/2 ft. Junjo size	1.00	1.45	1.80	2.30	2.80
4 1/2 ft. Big Boy	1.00	1.45	1.80	2.30	2.80
4 1/2 ft. Rainier	1.00	1.45	1.80	2.30	2.80
4 1/2 ft. Montmorency	1.00	1.45	1.80	2.30	2.80
4 1/2 ft. Bing	1.00	1.45	1.80	2.30	2.80
4 1/2 ft. Lapins	1.00	1.45	1.80	2.30	2.80

### Prices on Pie Cherries

1 to 5	5 to 10	10 to 30	30 to 50	50 to 100
Each	Each	Each	Each	Each
1.00	1.45	1.80	2.30	2.80
1.00	1.45	1.80	2.30	2.80
1.00	1.45	1.80	2.30	2.80
1.00	1.45	1.80	2.30	2.80

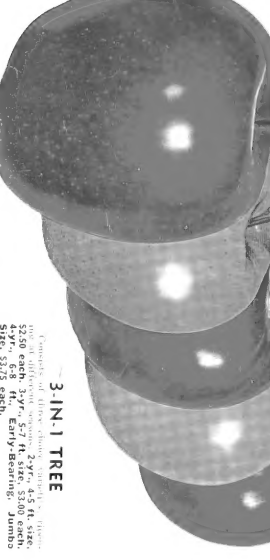
**RED YORKING**  
**THE SUPER RED**  
 This plant produces a reliable crop of red apples that are well adapted for eating, for cooking, and for making cider. It is a very productive tree with a long life span.



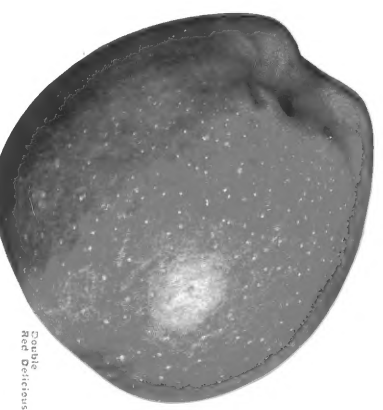
### Standard Summer and Fall Apples

Golden Delicious	4 1/2 ft. Junjo	1.00	1.45	1.80	2.30	2.80
Red Delicious	4 1/2 ft. Junjo	1.00	1.45	1.80	2.30	2.80
Winesap	4 1/2 ft. Junjo	1.00	1.45	1.80	2.30	2.80
Gravenstein	4 1/2 ft. Junjo	1.00	1.45	1.80	2.30	2.80
Sturtevant	4 1/2 ft. Junjo	1.00	1.45	1.80	2.30	2.80

**5-IN-1 TREE**  
**Five Leading Varieties on One Tree**  
**Quintuplet Apple Tree**  
 This tree produces five different varieties of apples: Golden Delicious, Red Delicious, Winesap, Gravenstein, and Sturtevant. It is a very productive tree with a long life span.

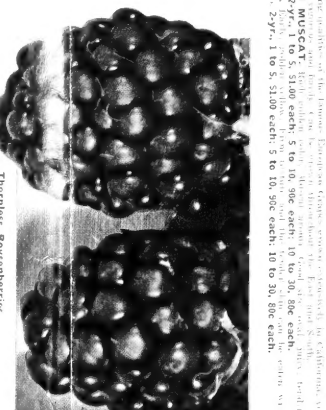


**3-IN-1 TREE**  
 This tree produces three different varieties of apples: Golden Delicious, Red Delicious, and Winesap. It is a very productive tree with a long life span.

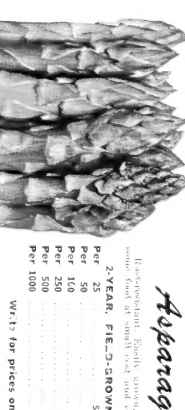


**BUNCH Grapes**  
**SELECT GRAPES**  
**PRICES ON SELECT GRAPES**

1 to 5	5 to 10	10 to 30	30 to 50	50 to 100
Each	Each	Each	Each	Each
1.00	1.45	1.80	2.30	2.80
1.00	1.45	1.80	2.30	2.80
1.00	1.45	1.80	2.30	2.80

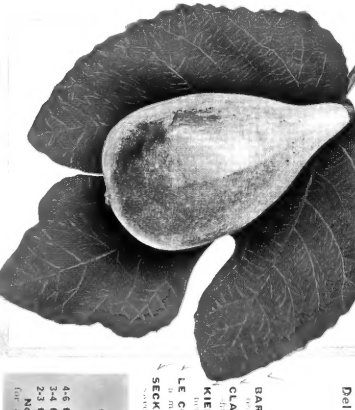


**Berry**  
**THORNLESS BOYSENBERRY**  
**LUCETTA DEWBERRIES**



### Paw Paw

1 to 5	5 to 10	10 to 30	30 to 50	50 to 100
Each	Each	Each	Each	Each
1.00	1.45	1.80	2.30	2.80
1.00	1.45	1.80	2.30	2.80



**Pears**  
**5-in-1 Pear Tree**  
**Delicious Fresh From The Tree**  
**MAY BE USED FOR SHADE AS WELL AS FRUIT**

**Plums**  
**EARLY PROLIFIC**  
**BURLY**  
**EUROPEAN PRUNE**  
**GREEN GAGE**  
**MAMMOTH GOLDEN**  
**SHIROSHIRI DANBURY**

**Plum Prices**  
**Early Prolific**  
**Burlly**  
**European Prune**  
**Green Gage**  
**Mammoth Golden**  
**Shiroshiri Danbury**

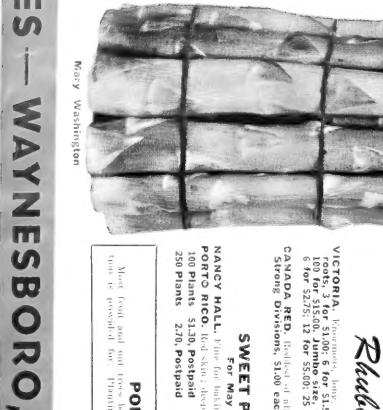
### Pine Cherries

1 to 5	5 to 10	10 to 30	30 to 50	50 to 100
Each	Each	Each	Each	Each
1.00	1.45	1.80	2.30	2.80
1.00	1.45	1.80	2.30	2.80

**Blueberries**  
**Blueberry Collection**  
**NEW ORIENT PEAR**  
**Superb Hardy Apricot**  
**Nectarines**



**WAYNESBORO NURSERIES — WAYNESBORO, VIRGINIA**



**Blubarb**  
**POLLINATION**

Blue Girl



## African Violets

The most popular indoor potted plants. Offered in a selection of choice standard varieties and new introductions. **Blooming size plants.**

**FOLLOWING FAVORITES OFFERED AT \$1.00 EACH:**

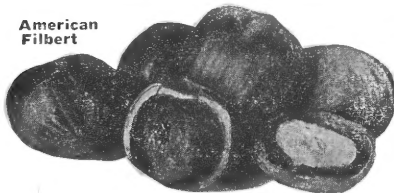
- BLUE BOY.** Well-known, popular purple-blue.
- BLUE GIRL.** Favorite dark blue-violet.
- PERIWINKLE.** Good light periwinkle-blue.
- PINK LADY.** Favorite pink.
- RED GIRL.** Orchid with reddish tints.
- RED HEAD.** Free blooming burgundy-purple.
- RED SPORT.** Dark reddish purple.
- WHITE LADY.** Snow-white blossoms.

### Novelties and Recent Introductions:

- AMERICA.** Huge true blue. Large leaves. \$2.00 each.
  - AZURE BEAUTY.** Double white with blue center. Outstanding. \$2.00 each.
  - BLUE HEIRESS.** New giant light blue. \$2.00 each.
  - DUPONT DARK BLUE.** Large, deep violet-blue. \$1.25 each.
  - FANTASY.** New lavender-pink splashed with deep purple. \$1.50 each.
  - LADY GENEVA.** Violet-blue with white edge. \$1.50 each.
  - RED KING.** Best deep purple-burgundy. \$1.50 each.
  - SNOW GIRL.** Large, pure white. \$1.50 each.
- Note:** Parcel post shipment recommended for African Violets. Add 25c postage for one plant; 20c per plant postage on two or more.  
Write for Complete African Violet Price List.

Write for Free Copy  
New 56-page Planting Guide  
Catalog in color.

American Filbert



### FILBERTS (Hazelnuts)

Adapted to a wide range of soil and climate. **NATIVE AMERICAN FILBERT.** Dwarf grower, trees maturing at 15 feet. Attractive bush, young bearer. Tasty, round nuts.

	1 to 5	5 to 10	10 to 30
	Each	Each	Each
2-3 ft.	\$1.50	\$1.25	\$1.00
3-4 ft., Bearing Size	2.00	1.75	1.50
4-5 ft., Bearing Size	3.00	2.75	2.50
5-6 ft., Bearing Size	4.00	3.75	3.00

### CHINQUAPIN

Small shrub-like tree. Early bearer. Delicious nuts 1/2 inch in diameter ripening in September. Ornamental and fruitful.

	1 to 10	10 to 30
	Each	Each
18-24 in., Bearing Size	\$2.25	\$2.00
2-3 ft., Bearing Size	2.75	2.50

**Note:** We recommend wrapping the trunks of nut trees with burlap or paper the first summer after transplanted, to protect against sun scald.



## Chinese Chestnuts

**BLIGHT-RESISTANT.** Large sweet Chestnuts are again a reality. Replacing the American Sweet Chestnut, which was destroyed by blight. Plant Chinese Blight-resistant Chestnuts for attractive home ground shade trees and also reap a harvest of delicious, sweet nuts.

### PRICES

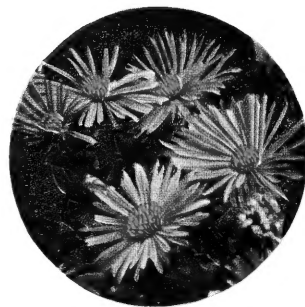
	1 to 10	10 to 30
	Each	Each
2-3 ft.	\$2.45	\$2.20
3-4 ft., Bearing Size	3.00	2.75
4-5 ft., Bearing Size	3.75	3.50
5-7 ft., Bearing Size	4.50	4.25
7-8 ft., Bearing Size	6.00	5.50

Write for commercial growers' prices on lots of more than 30.

## Cannas

For beds and borders. Generally plants 18 inches apart. A planting made in early May will furnish bloom throughout late summer and fall.

- CITY OF PORTLAND.** Beautiful rose-pink. Green foliage. 3 ft.
  - KING HUMBERT RED.** Fiery red. Bronze foliage. 4 ft.
  - KING HUMBERT YELLOW.** Well-known yellow. Green foliage. 3 ft.
  - KING MIDAS.** Lemon-yellow dotted with red. Green foliage. 3 ft.
  - PRESIDENT.** Glowing scarlet. Green foliage. 3 ft.
- CANNA PRICES** — Not less than 3 of a variety.  
**NAMED VARIETIES:** \$1.10 per 6; \$1.85 per 12; \$3.25 per 25; \$6.00 per 50; \$11.00 per 100.  
**GOOD MIXTURE:** \$1.50 per 12; \$2.75 per 25; \$5.00 per 50; \$9.00 per 100.



Hardy Aster

## Hardy Perennials

For best effect, plant three or more of a variety.

### HARDY ASTERS

Bloom in September and October when the garden needs color. **Improved varieties, as follows: 3 of one variety, \$1.60; 12 for \$6.00, your choice of varieties.**  
**MULEERRY.** New mulberry-red. 4 ft.  
**SUNSET.** Prolific bloomer. Sunset-pink. 3 ft.  
**VIOLETTA.** Rich, deep violet-blue. 3 ft.

**CHRYSANTHEMUMS, HARDY.** Write for our New 56-page Planting Guide Catalog, illustrating and describing choice varieties.  
**ALYSSUM SAXATILE COMPACTUM** (Basket of Gold). Bright yellow. Early spring. 3 for \$1.20; 12 for \$4.50.  
**DELPHINIUM, ENGLISH HYBRIDS** (Perennial Larkspur). Shades of blue blending into delicate pink. June. Tall-growing. 3 for \$1.20; 12 for \$4.50.  
**PHLOX, HARDY STANDARD.** Generally considered one of the best perennials. May be had in Pink, Red, and White, blooming over an extended period through midsummer. 3 for \$1.35; 12 for \$5.00, your choice of colors.

### PHLOX SUBULATA—CREEPING PHLOX

Early spring-flowering. Moss-like evergreen foliage, which during flowering season is covered with masses of bloom. We offer following choice varieties: **3 of one variety for \$1.20; 12 for \$4.50, your choice of varieties:**  
**ALBA.** Pure white.  
**ASTRO.** Deep orchid-rose.  
**BLUE HILL.** Showy, blue flowers.  
**CRIMSON BEAUTY.** New cyclamen-red.

Phlox Subulata

Write for Prices on Larger Sizes and Quantities of Nut Trees.

## For Shade and Profitable Crops

Plant two or more to provide for cross pollination.

### ENGLISH WALNUT

Hardy, thin shell. Being planted commercially from Florida to New York. Trees long lived, prolific. Nuts excellent quality, selling for equally as much as those grown in California.

	1 to 10	10 to 30
	Each	Each
12-18 in., 1 yr.	\$1.20	\$1.00
18-24 in., 2 yr.	1.60	1.35
2-3 ft., 3 yr.	2.75	2.50

### BLACK WALNUT

Planted for both nuts and timber.

	1 to 10	10 to 30
	Each	Each
2-3 ft.	\$1.20	\$1.00
3-4 ft.	1.75	1.60
4-6 ft.	2.25	2.00
6-8 ft.	3.00	2.75
8-10 ft.	3.75	3.50
1-yr., 12-15 in., \$2.50 per 10; \$18.00 per 100.		

### AMERICAN SHELLBARK HICKORY

Delicious, thin-shell Hickory Nuts may still be grown, harvested and enjoyed. 3-4 ft., \$3.75 each; 4-5 ft., \$4.75 each.

### PECANS

The most profitable nut crop of the South. Planting not recommended north of Virginia. Useful for shade as well as growing for nuts.

**STUART.** Possibly the best known and most extensively planted Pecan.

	1 to 5	5 to 10	10 to 30
	Each	Each	Each
3-4 ft.	\$3.25	\$3.00	\$2.75
4-5 ft.	4.00	3.75	3.50

**MAHAN.** New Giant Early Bearer. Trees frequently start bearing two or three years after being transplanted.

	1 to 5	5 to 10	10 to 30
	Each	Each	Each
3-4 ft.	\$3.75	\$3.50	\$3.25
4-5 ft.	4.75	4.50	4.25

### PAPERSHELL PECAN

Thin shell. Good quality.

	1 to 5	5 to 10	10 to 30
	Each	Each	Each
3-4 ft.	\$2.75	\$2.60	\$2.45
4-5 ft.	3.50	3.25	3.00

